

ベリーファイアとビーバーコーポレーションのコラボ商品、生産数量限定新製品の1/350 日本海軍 超大和型戦艦 紀伊のご案内です。



1/350 IJN Battleship Kii Detail Up Set

CNC Scribed Brass Part:



Resin Part:

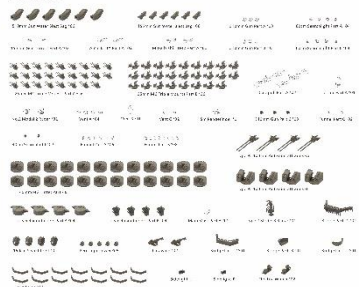
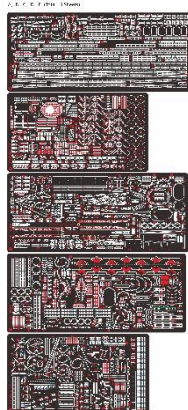
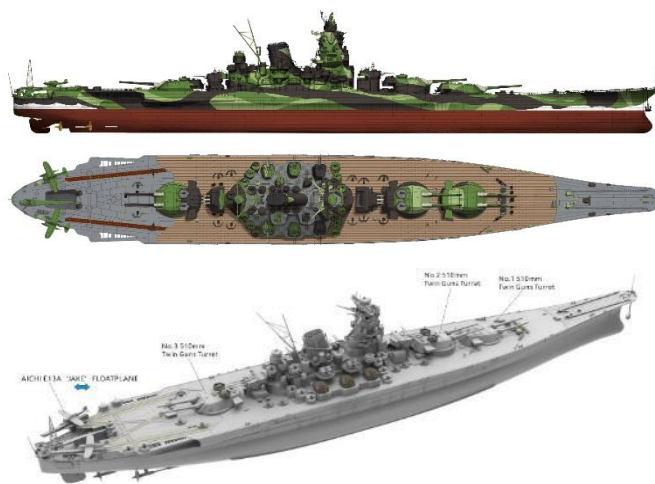


Photo Etching:



Wooden Deck:



日本海軍はアメリカが建造を開始した戦艦群に対抗するため、1942年に⑤計画(第五次海軍軍備充実計画)で大和型戦艦の強化発展型である超大和型戦艦2隻を計画しました。当初基準排水量85,000トン、51cm砲3連装3基又は連装4基、速力30ノットを計画していましたが、ドックや補給施設・港湾設備などの問題から最終的に51cm砲連装3基を大和型に近い規模の艦体に搭載し、速力も大和型と同等とする案が提出されたと言われています。また艦名に関しては資料が存在しないものの、戦艦艦名の命名規則に従い八八艦隊計画で計画された戦艦「紀伊」「尾張」の名を受け継ぐ予定であった、と唱える軍事評論家もいます。

品番	品名	JAN	税抜 小売価格	御注文 (個)
BEL BV350908 DX	1/350 日本海軍 超大和型戦艦 紀伊	4571628242524	¥49,400	NEW!

※メーカー都合により入荷予定月と実際の商品仕様が変更になる場合がございます。予めご了承ください。

ご注文締切 月 日()

貴店名

問屋様名

こちらの注文書は <http://beavercorp.jp>

よりPDFでダウンロードが可能です



(株)ビーバーコーポレーション



The Yamato-class was a battleship planned by the Imperial Japanese Navy in anticipation of the construction of new battleships by the United States and the United Kingdom after the expiration of the London Naval Treaty. The caliber of the main guns was decided to be 46 cm, as it was expected that American and British battleships, which were limited to "Panamax" (a size that could pass through the Panama Canal), would not be larger than 16 inch (40.6 cm) guns, and this was overwhelmingly what was chosen. Although Yamato was completed in December 1941 and Musashi in August 1942, construction of the Shinano, a modified Yamato-class battleship that was laid down under the Fourth Replacement Plan (Plan ④), and the No. 111 ship was halted (only Shinano was completed as an aircraft carrier). Then, after the outbreak of the Pacific War in 1942, construction of three battleships was decided under the Fifth Replacement Plan (Plan ⑤), of which two, No. 798 and No. 799, were Super Yamato-class battleships. It is said that there were plans for the modified Yamato-class ships to have three twin 51 cm main guns or a long-barreled 46 cm 50-caliber triple gun. In addition, the four 15.5 cm triple secondary guns, one each on the front, rear, left and right of the central superstructure, were previously mounted, but the two on the left and right were not installed, and it was planned from the beginning to be replaced with anti-aircraft guns (this specification change was planned for the modified Yamato-class. The Yamato-class removed the anti-aircraft guns in early 1944 and then added more), and there

was also a proposal for the anti-aircraft gun to be the Type 98 65-caliber 10 cm anti-aircraft gun.

In terms of defense, the Yamato-class's 410mm side armor and 200mm (maximum) deck armor were deemed to be more than sufficient for defense against 46cm guns, so it was planned to lessen the armor to 400mm on the sides and 190mm on the deck, and conversely, the defensive barrier at the bottom of the ship was planned to be strengthened from the Yamato-class's double to triple.

No. 798 was to be laid down after construction of No. 111 was completed at the Kure Naval Arsenal, and No. 799 was to be laid down after a new shipyard was built in Oita Prefecture, but construction was cancelled when increasing air power became a priority for Japan after the Battle of Midway.

The names of the Super Yamato-class battleships had not been decided, but the names "Kii" and "Owari" that are currently known are speculations based on the names announced at the time of the 8-8 Fleet Plan, with "Kii" being the most famous.



株式会社ビーバーコーポレーション
栃木県佐野市富門町1717-1
日本 327-0844

Beaver Corporation, Inc.
Tomioka-cho 1717-1, Sano-Shi, Tochigi-ken, Japan.

